
TE:^D Learning

Technology Enabled Learning Programme



Parent Engagement 18 October 2022
On Zoom



18 Oct

WELCOME

THANK YOU FOR MAKING TIME!


Programme

01 Why TE:^D 1 to 1?

02 Learning with Technology

03 Working Together



A photograph of two young students, a boy and a girl, in a classroom setting. They are both wearing light blue school uniforms. The girl is leaning over the boy, and they are both looking intently at a tablet computer that the boy is holding. The background is slightly blurred, showing other students and classroom furniture. A white circular graphic with the text 'SINCE 2016' is overlaid on the image.

SINCE
2016

CHANGING THE WAY WE TEACH AND LEARN

TE[·]D ENGAGED JOYFUL LEARNING




2022

TE:D TODAY

IT HAS BEEN 7 YEARS!

A young boy with dark hair, wearing red-rimmed glasses and a dark blue face mask, is seated at a bright yellow desk in a classroom. He is looking down at a tablet device he is holding with both hands. In the background, other students are partially visible, also seated at similar desks. The scene is brightly lit, suggesting a sunny day.

**NOT BY CHANCE
NOT BY
CIRCUMSTANCES**

A close-up photograph of a hand placing a small, rectangular wooden block onto a stack of similar blocks. The background is a soft, out-of-focus light blue and white. The hand is positioned in the upper right, with fingers carefully guiding the block. The stack of blocks is in the lower center, showing several layers.

2016
TO
2022

**BOLD BUT
CAREFULLY CALIBRATED**

Technology can amplify great teaching but great technology cannot replace poor teaching.

- SLS PEDAGOGICAL SCAFFOLD
- DIFFERENTIATED INSTRUCTION (SINCE 2017)
- FEEDBACK (2016-2019)
- LEARNING OUTCOMES (2019-2022)
- SUCCESS CRITERIA (2020-2022)

TEACHERS' PREOCCUPATION

TE:D FPPS – meaningful, moderate use
of technology



The tone is quite clear: The **world is going to be fundamentally different** - we need to understand, and more importantly, **need to be able to respond** to these trends.

Minister Ong, Singapore Summit 2018





[We must] be
prepared **to disrupt**
ourselves before
we get disrupted,
by technology...

DPM Teo 8 Nov 2017



VUCA



VOLATILITY



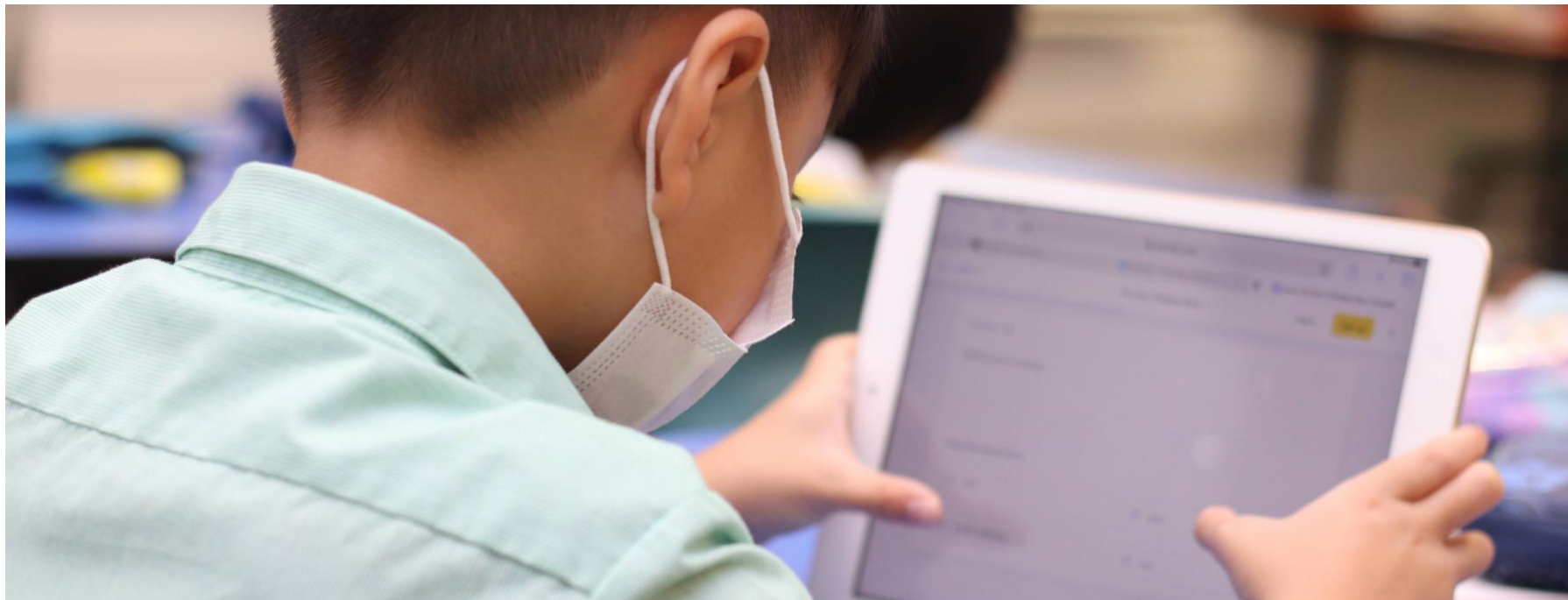
UNCERTAINTY



COMPLEXITY



AMBIGUITY



POSITIVE STUDENT ACADEMIC OUTCOMES

SPECTACULAR PSLE RESULTS

Wireless Projection

TE:D

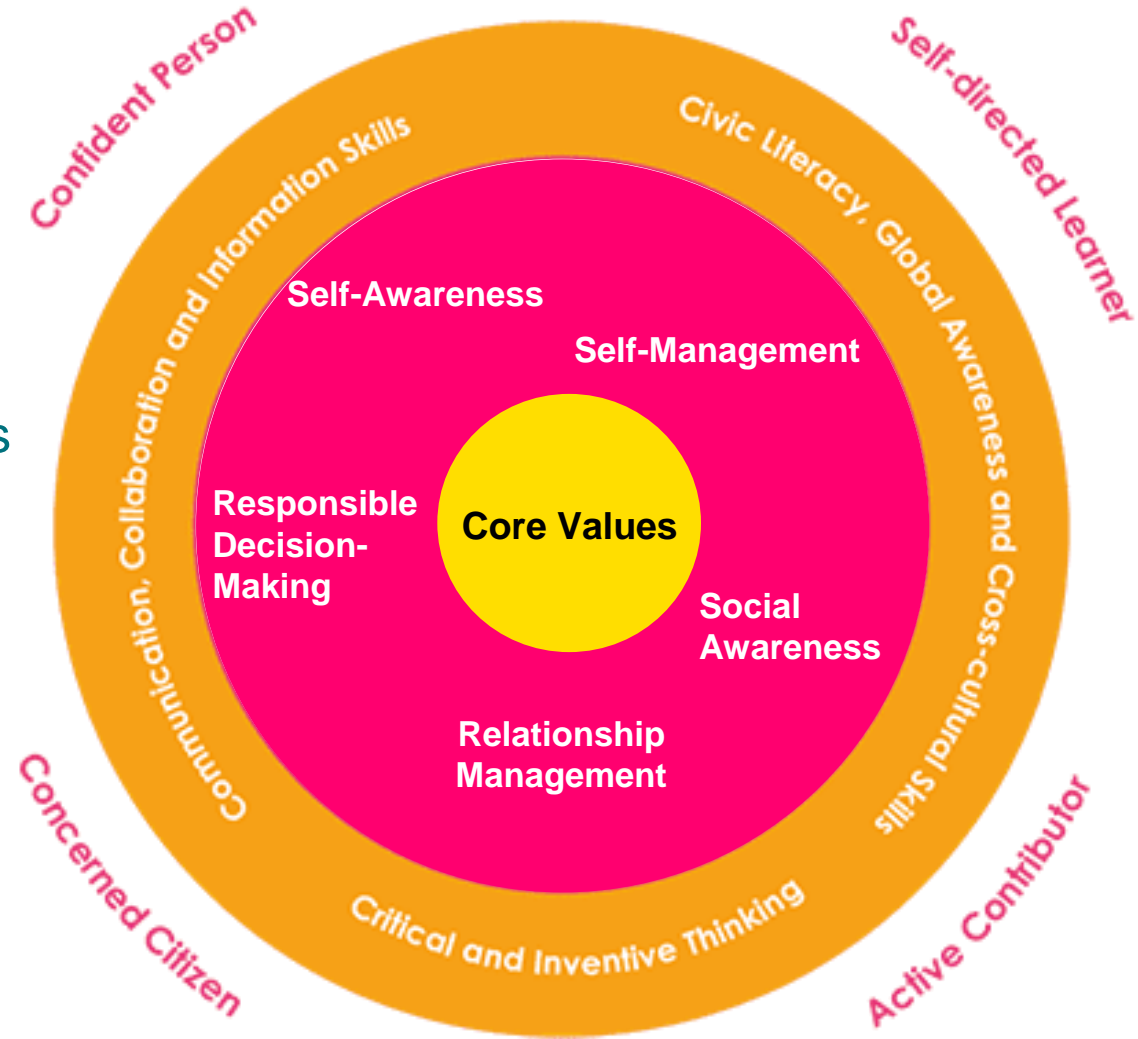
Collaborative tools

Programme

Network access

Online resources

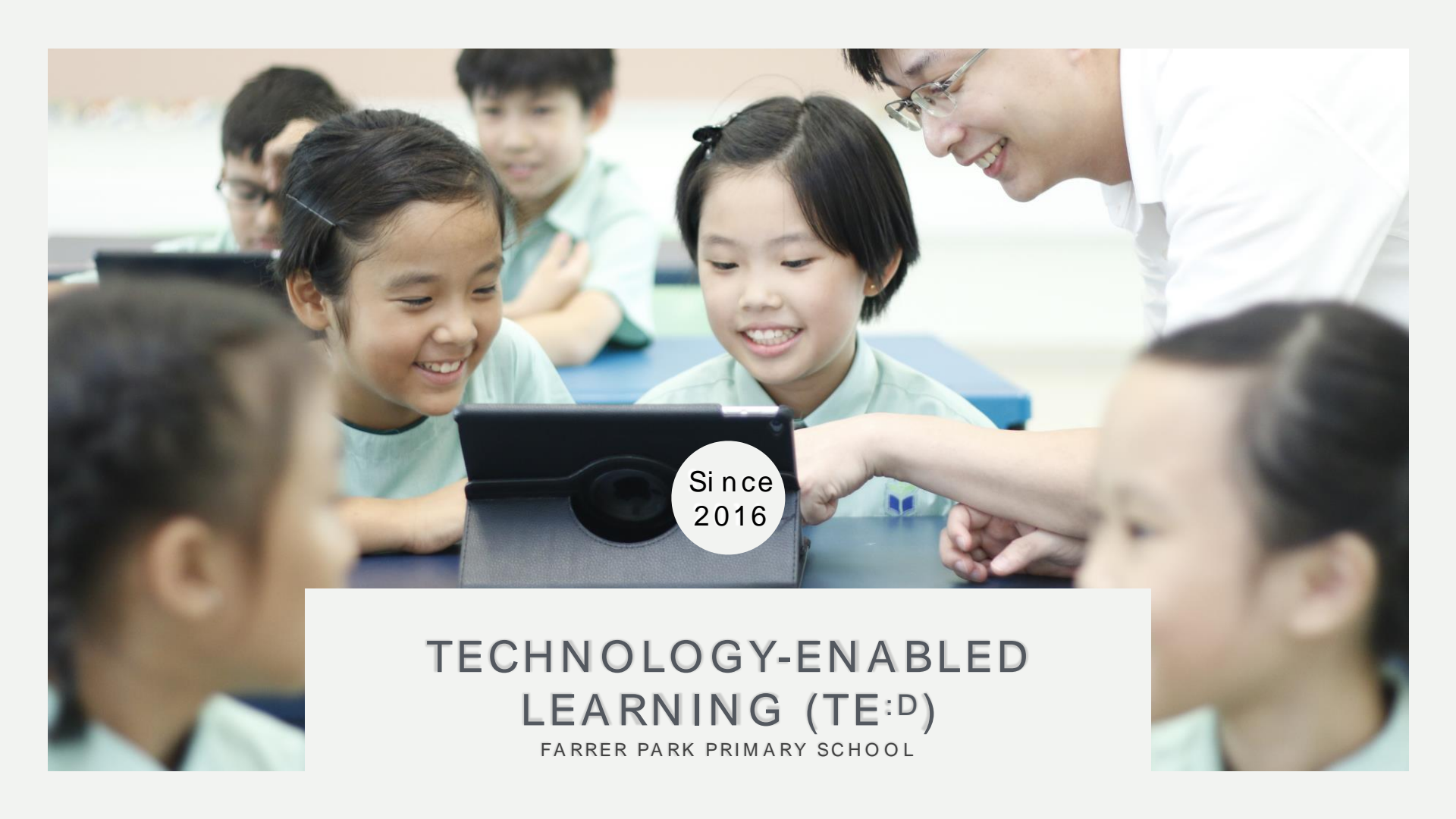
Active Learning Processes





NOT ALWAYS ROSY AND NICE

CLOSE HOME-SCHOOL PARTNERSHIP

A photograph of a classroom scene. A male teacher with glasses and a white shirt is leaning over a desk, smiling and pointing at a tablet. Two young girls in light blue school uniforms are looking at the tablet with interest and joy. Other students are visible in the background, also engaged in learning. The scene is brightly lit, suggesting a modern educational environment.

Since
2016

**TECHNOLOGY-ENABLED
LEARNING (TE:D)**
FARRER PARK PRIMARY SCHOOL

**How does it look like
in a classroom?**



Using various platforms for different needs

Quizlet

**For self-directed
learning**



Google Classroom

**For extending
learning**

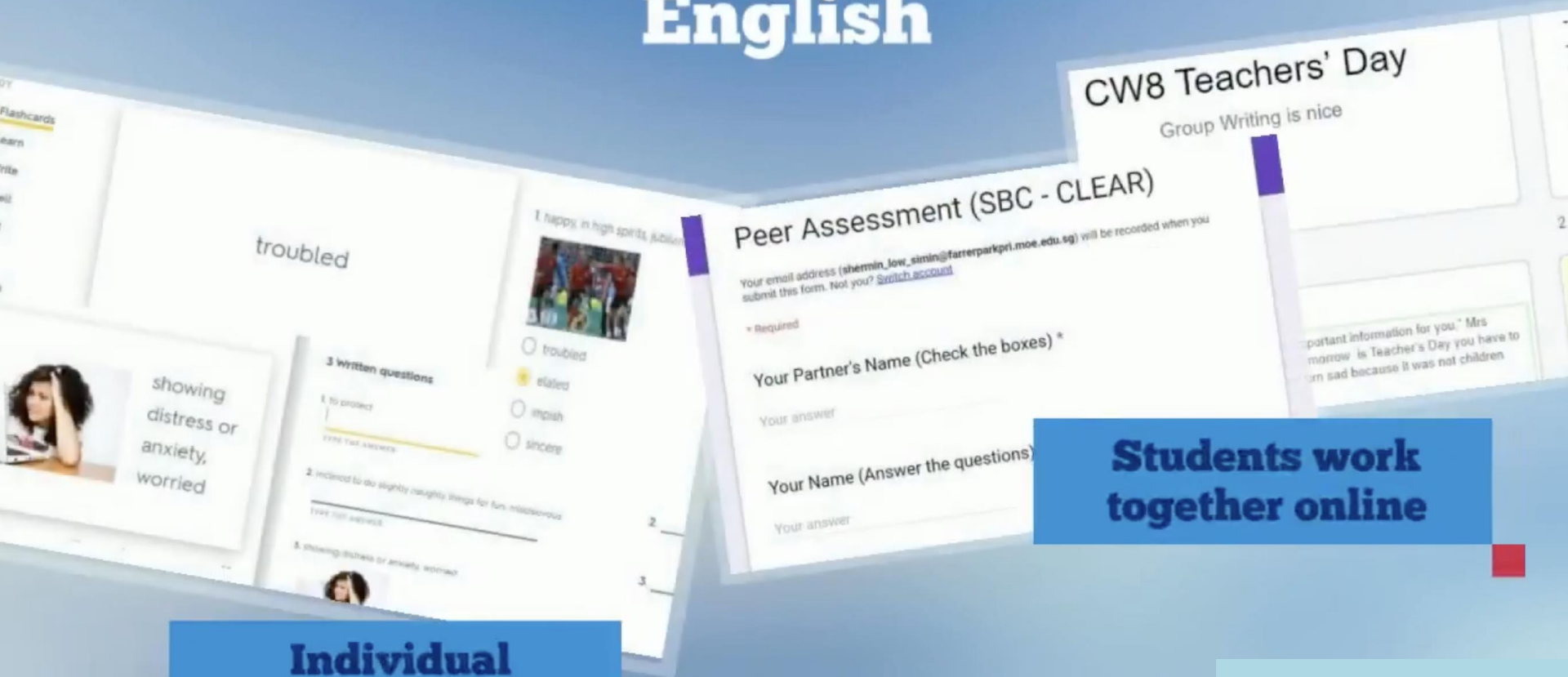
Seesaw

Student Login

**For formative
assessment**

Kahoot!

English



**Individual
revision**

**Students work
together online**

(See history)

because she wants to finish the rei

A and Tenses Kahoot 1

Play

Challenge

Public kahoot

favorites

44 plays

290 players

25

ZHI XUAN, ALYSSA

It's not a need 😐 its a

XAYVIER

Wants not need

KEITH

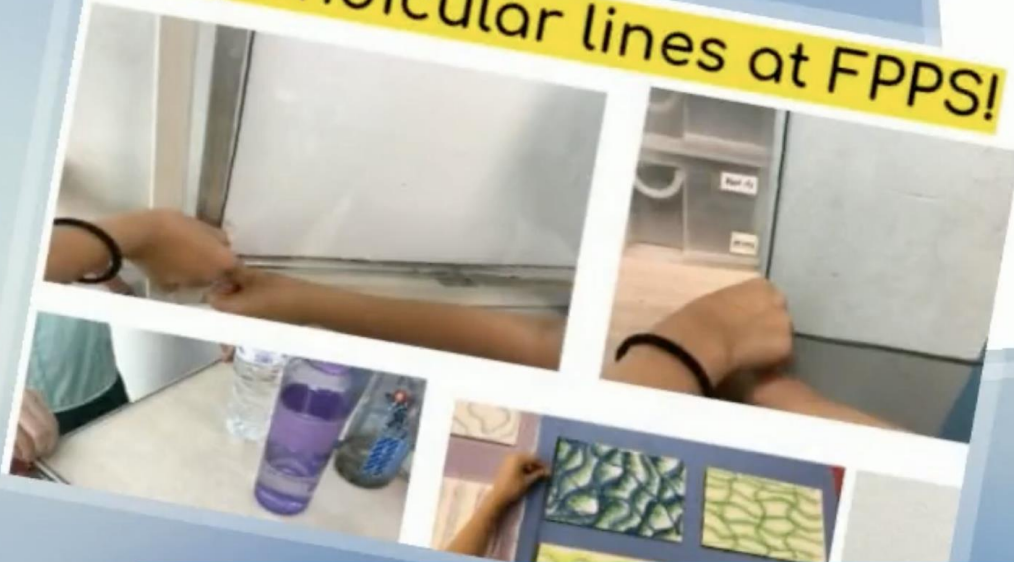
I changed it

Apr 8

**Learning through
fruitful discussions and
class competitions!**

Authentic Learning

Perpendicular lines at FPPS!



Instructions

1. Look for **perpendicular lines** around you!
 - Clue: Look for straight lines around you that cross at a **right angle**.

Take turns to work in your team.

- 2 members will use **strings** to show those
- 1 member will take a **photo** of the perpendicular lines

Insert the photos into your slides!

- Insert > Image > Camera
- You can resize your photos to fit more in

Students show their understanding in creative ways

Mathematics

**Making thinking
visible online**

Ways to show multiplication

Repeated Addition:

$$8 + 8 + 8$$

Groups of:



English:

3eight

Equation:

$$3 \times 8$$

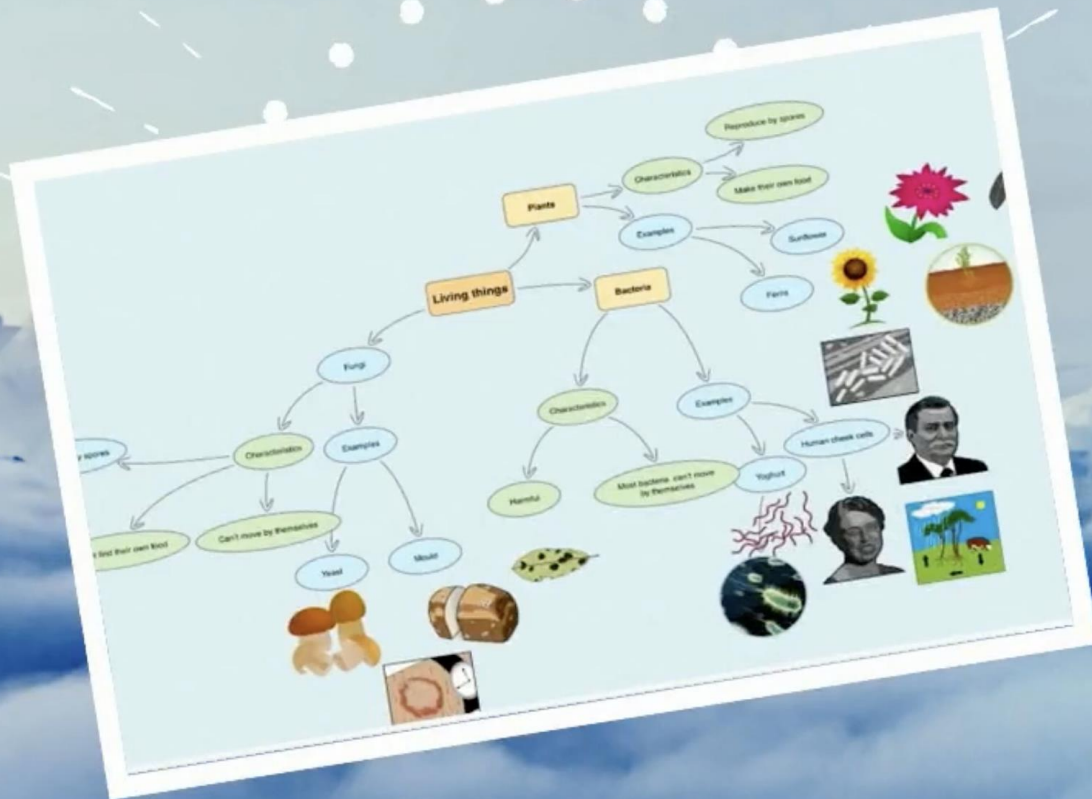
Commutative Property:

$$8 \times 3$$

**Students
demonstrate their
understanding of
multiplication**

Science

Using an interesting mindmap to organise learnt concepts



2-Step MCQ



Which statements about objects A and B are correct?

- Object A is a magnet but object B is non-magnetic
- Object B is a magnet but object A is non-magnetic
- Both objects A and B are made of magnetic materials
- Object A is made of Aluminium and object B is made of copper

Object b is actually pulling

I think that both objects A and B are magnetic

I think both object A and B are made of magnetic materials

They attract each other

If +

and justify
their answers

... says that "objects A and B were

**Students answer a
MCQ question**



CREATED USING
POWTOON

Purposeful Use of Technology

- * Integrated into English, Mathematics, Mother Tongue and Science
- * Over 3 Years per cohort - P3, P4 and P5
- * Cyberwellness will be part of the learning programme





CURIOUS, OPEN-MINDED, ADAPTABLE, REFLECTIVE,
AND ENGAGED LEARNERS

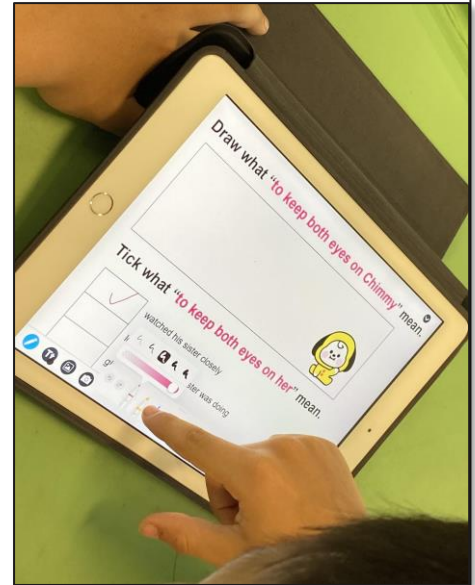
AN OPPORTUNITY TO
DEVELOP OUR PUPILS

Timeline

	Rollout	Highlights
January	TE ^D Great Start	Skills, Classroom Procedures, Google Classrooms
February	Parent Engagement	Information and updates
From February (Term 1 & 2)	Equipping of learning devices	Students can purchase and bring their iPads to school
July (Term 3)	Just-in-Time Parent Workshops	Managing iPads at home and school
September (Term 4)	Parent Focus Group Discussion (FGD)	Collecting Feedback

Why we chose the iPad?

- * Powerful creation apps and hardware
- * Built-in accessibility features
- * Intuitive user experience
- * Student privacy and safety
- * High quality, low maintenance



Recommended Device

- * iPad (10.2-inch) 64GB WiFi
- * 2 Year AppleCare Protection Plan
- * Protective Case



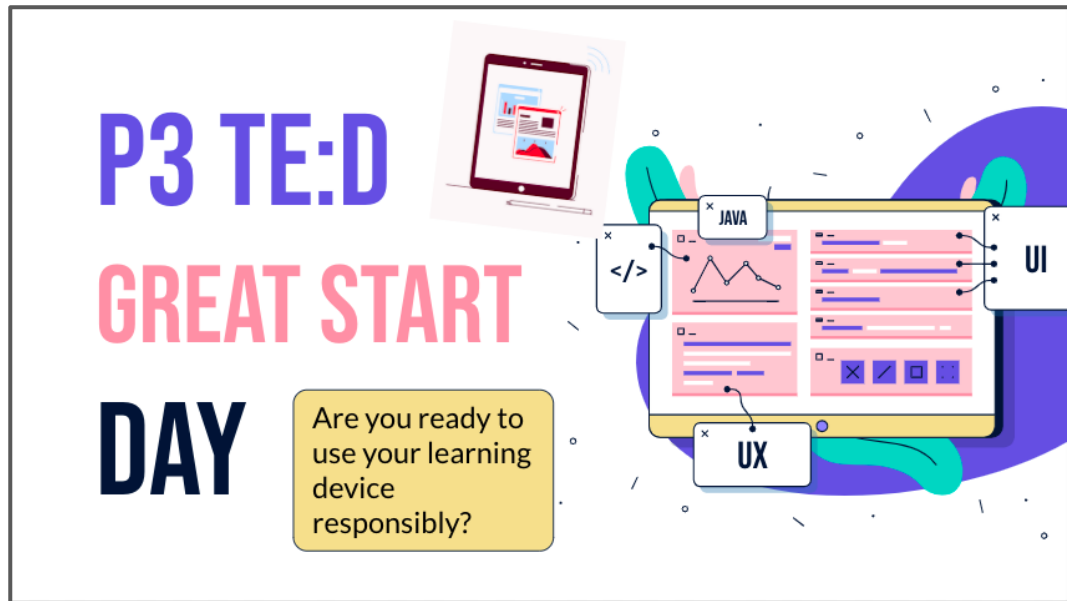


MAINTAINING A SAFE HOME-SCHOOL ENVIRONMENT

FOR EVERY CHILD

Starting off right

Laying a good
foundation.



Keeping Students Safe

- iPads are kept in the classroom when not in use
- iPads are not used outside of classroom without teacher's permission
- Teachers address issues of cyber-safety, personal information, online dangers, cyber bullying, Apps on device
- ICT Student Use Policy



Keeping Students Safe

- Password
- Sharing sensitive information
- Screen time
- Apps on device
- Internet filtering at home and school
- Communicating with messages, email and school
- Technology use guidelines for both home and school

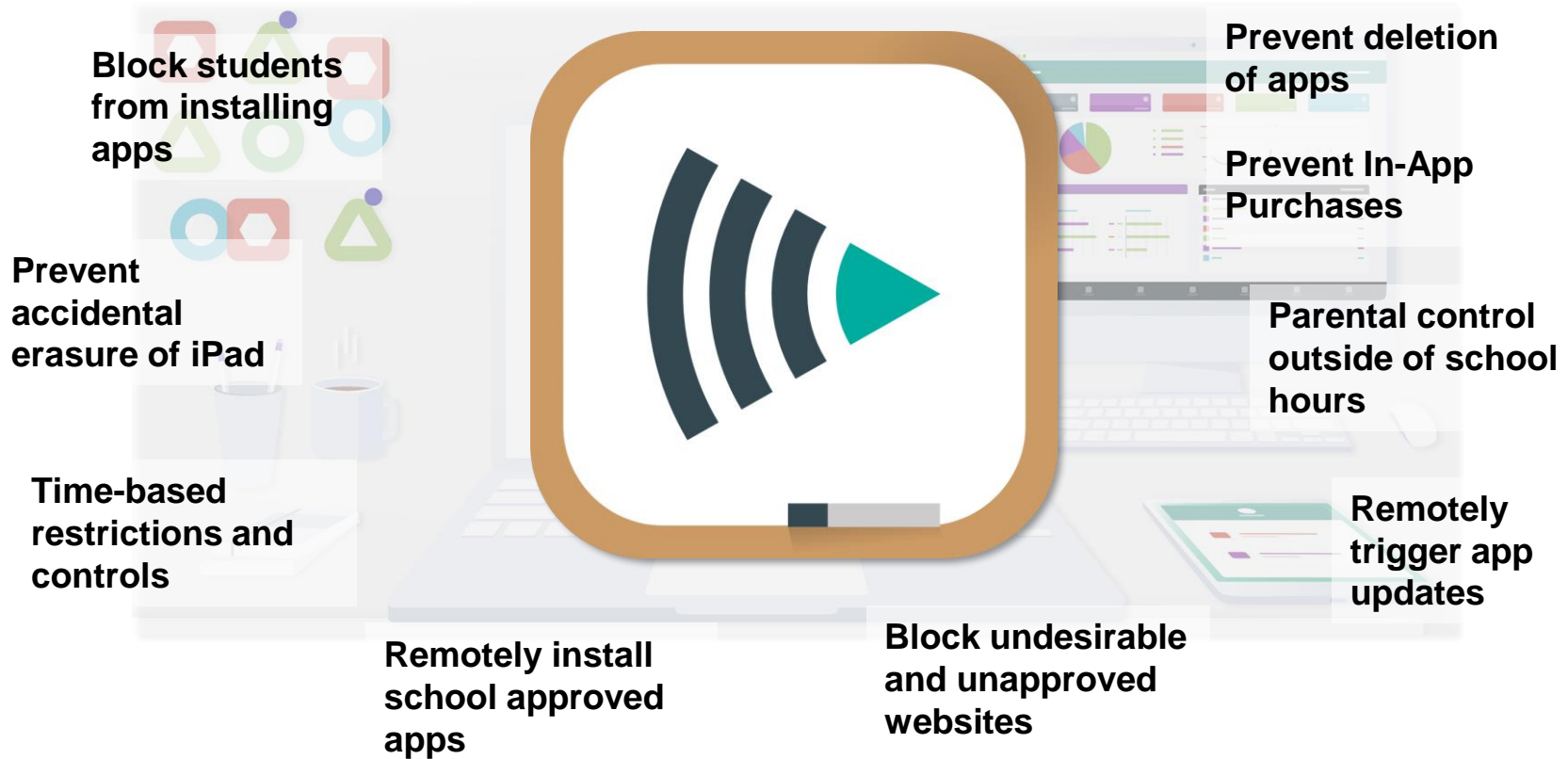


At Home

- Care in Use
- Charging the iPad
- Transporting the device
- Cleaning and Care
- Monitoring Usage

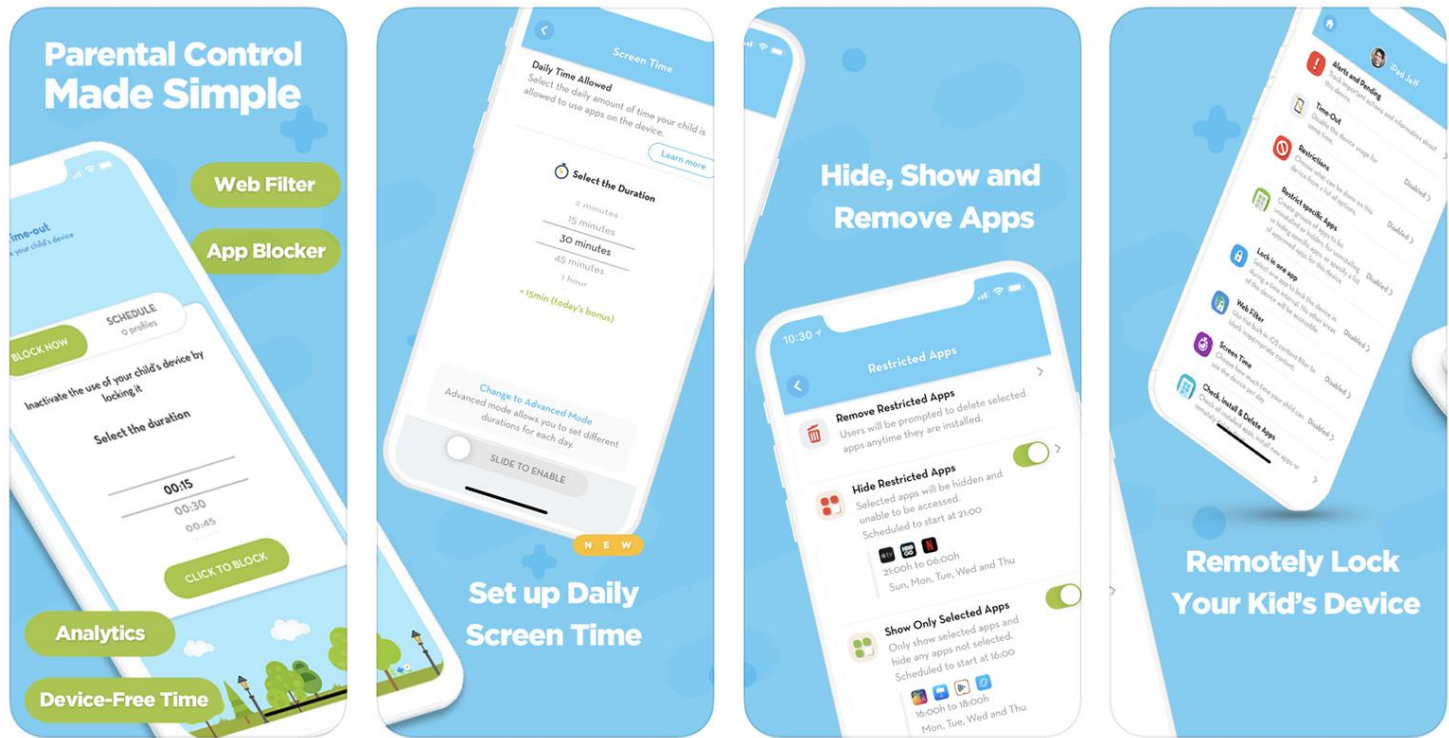


Mobile Device Management with Mosyle Manager





Centralised control by school administrators during school hours



Custom parental controls outside of school hours



THANK YOU
Educating our pupils for the future...